

WHO'S WHO  
IN  
METHODISM  
1933



# LEYS SCHOOL CAMBRIDGE

*Headmaster :*  
**Rev. H. BISSEKER, M.A.**

Valuable open Scholarships and Exhibitions are offered for competition in June each year, in addition to Scholarships restricted to boys of Methodist parentage and to sons of Methodist Ministers which are offered as Vacancies occur.

---

*Applications and inquiries should be addressed to the Bursar.*



**TWO POPULAR HOTELS IN CENTRAL LONDON**

Opposite the British Museum

**THACKERAY HOTEL**

Great Russell Street, London, W.C.1

Near the British Museum

**KINGSLEY HOTEL**

Hart Street, Bloomsbury Square, London, W.C.1.

200 Rooms in each Hotel      Modern Arrangements  
COMFORT                              ::                              REFINEMENT  
Hot and Cold Water and Electric Fires in all Bedrooms

**BEDROOM and BREAKFAST - - 8/6 PER NIGHT**

*INCLUSIVE TERMS ON APPLICATION*

Telegrams :

Thackeray Hotel : "THACKERAY, LONDON."    Kingsley Hotel : "BOOKCRAFT, LONDON."

"All that is Beautiful  
shall Abide for Ever."

**\* Arts and Crafts \***  
**for Methodist Churches**  
also Beautiful Cemetery Memorials

"Art is the voice of God and its  
powers for good are infinite."

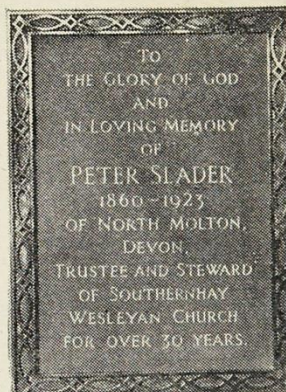


**The Glory of Stained Glass**

A STAINED Glass Window is one of the most beautiful forms for a Memorial to be placed in a Church. The Glass with its jewel-like, rich colouring is most decorative and the whole appearance of the building in which the window is placed is enriched and beautified. The illustration shows a delightful window recently executed in Petersfield Methodist Church.

These illustrated and helpful descriptive BOOKLETS, Post Free.

- "MEMORIAL BRASSES AND BRONZES."
- "STAINED GLASS CHURCH WINDOWS."
- "CHURCH FURNITURE IN CARVED OAK."
- "BEAUTIFUL CHURCHYARD MEMORIALS."
- "GARDEN OF MEMORIES" (showing Bird Bath and Sundial Memorials)



Memorial Tablet erected at Exeter Methodist Church.

**Maile & Son, Ltd.**

The Church Craftsmen, Sculptors,  
& Stained Glass Artists,

367, Euston Rd., LONDON, N.W.1.

Several examples of Messrs. Maile's beautiful craftsmanship may be seen in Wesley's Chapel, City Road, London.



**THE  
JOURNAL  
OF THE  
NEW METHODISM**

**THE METHODIST**  
**TIMES & LEADER**

*A New Note  
in  
Religious Journalism*

THE METHODIST NEWSPAPER  
WITH A YOUTHFUL OUTLOOK

**EVERY THURSDAY**

.. .. TWOPENCE .. ..

FROM ALL NEWSAGENTS

# Who's Who in the pen world!

*WATERMAN'S—the acknowledged leader*

FOR nearly half a century, Waterman's has been the leader in its field—not merely as the most efficient writing instrument, but in the variety of styles, sizes, colourings, etc., available. Whoever owns a Waterman's has the finest pen that money can buy. A galaxy of Methodist writers, authors and preachers are confirmed Watermanites.

A Gold Waterman's Pen was used by Rev. Dr. Scott Lidgett for signing the Uniting Deed at the Albert Hall.

THE REV. H. B. WORKMAN, M.A., D.Lit., D.D., writes:—

"My Waterman's Fountain Pen is just perfect. It makes writing a delight. It gives me real satisfaction to testify to its unfailing usefulness. I am specially pleased with the way in which you supply nibs to suit the individual style of every writer. I should feel quite lost without my Waterman's Ideal."

Models shown:—No. 92 the £1 pen in colours and Jet (Pencil to match, 7/6). No. 94 in Agate, Blue, and Grey at 30/-. Other Waterman Models from 10/6.

EMPIRE MADE.

Stationers, Jewellers and Stores.

The Pen Book free from:

**L. G. Sloan, Ltd.,**

The Pen Corner

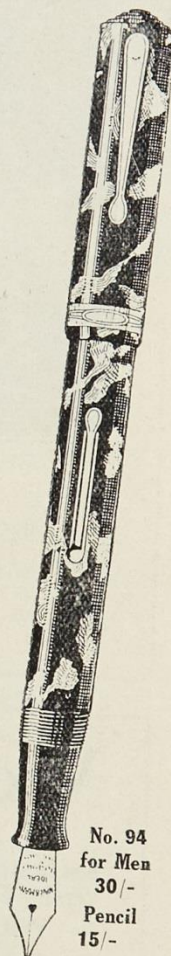
KINGSWAY, LONDON, W.C.2



No. 92  
the £1 pen



Always use Waterman's Non-Clog Ink.  
London made.  
2 ozs. ... 6d.



No. 94  
for Men  
30/-  
Pencil  
15/-

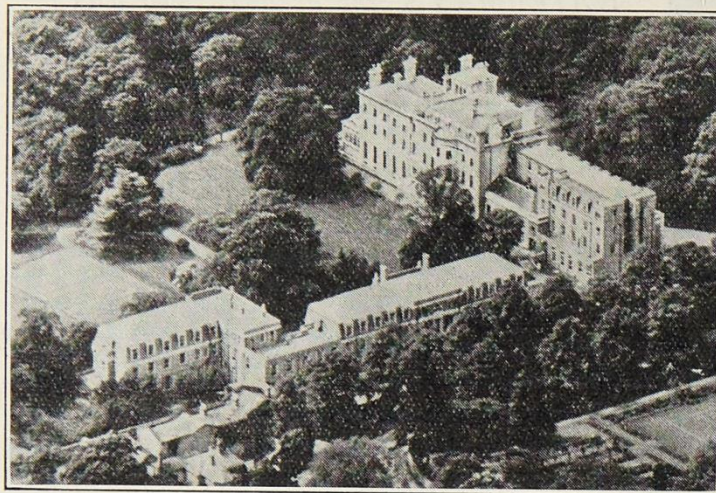
## Waterman's

PEN AND WATERMAN'S INK



## Southlands College

WIMBLEDON PARKSIDE, WIMBLEDON, S.W.19



Owing to the reduction in the number of students recognised by the Board of Education, Southlands College will have vacancies for Methodist students who wish to have hostel accommodation. Fee for full board and residence, including laundry, during University terms : 50 guineas per session. Early application is advisable. References will be required.

Apply to the PRINCIPAL.

## Westminster College

*(situated just off Victoria Street)*

has hostel accommodation for men students who are taking University Courses in London, other than for the teaching profession.

YOUNG METHODISTS COMING UP TO LONDON

find it a great conveyance to enjoy  
the privileges of a

RESIDENTIAL COLLEGE HOSTEL

while pursuing courses of study in Medicine, Law, Art, or other subjects.

*Applications should be made to :*

THE PRINCIPAL, 130 HORSEFERRY ROAD, WESTMINSTER, LONDON, S.W.1





## HUNMANBY HALL EAST YORKS.

---

PUBLIC  
RESIDENTIAL SCHOOL FOR  
GIRLS FROM  
NINE TO EIGHTEEN YEARS  
*Each girl has a separate cubicle*

---

Preparation  
for all Public Examinations  
including University entrance

---

**EARLY APPLICATION NECESSARY  
FOR 1934**

---

*For prospectus and full particulars  
apply to the Headmistress:*  
MISS F. A. HARGREAVES, B.A.

---

**INCLUSIVE FEES FROM £82 PER ANNUM**



## KENT COLLEGE FOLKESTONE

*Residential School for Girls*  
*Preparatory Department with Junior House*

Two Exhibitions available for September.

*Good Examination Results.*  
*Excellent Health Record.*  
*Fees Moderate.*

Head Mistress: MISS M. WALKER, M.A.

## WEST CORNWALL COLLEGE for GIRLS YORK HOUSE, PENZANCE

*Headmistress: Miss E. H. KILLIP, M.A., and Fellow  
of the University of Durham.*

Beautiful new premises at York House in high position overlooking Mount's Bay, with 12 acres of sub-tropical gardens. The alterations include the most modern and hygienic installations in Cubicles, Bathrooms, and other domestic arrangements.

Climate of Cornish Riviera specially suitable for children from the Colonies, or whose health requires special care. All Higher and University Examinations prepared for under a Staff of Honours Graduates. Kindergarten and Preparatory Department for boys and girls as boarders or day pupils. Further particulars from Head Mistress.

FEES : 75 Gns. p.a. Ministers' Daughters : 50 Gns.



# Edgehill Girls' College

BIDEFORD, NORTH DEVON

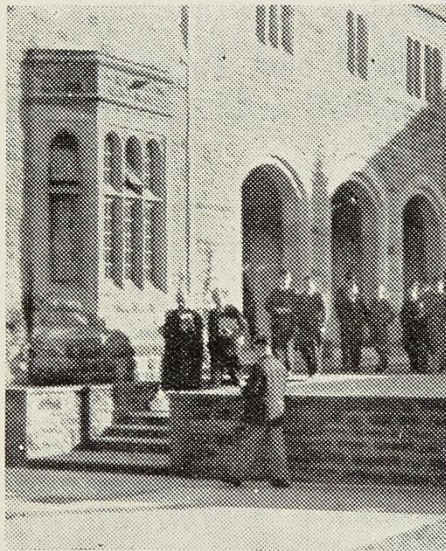
Head Mistress : MISS E. CUTHBERTSON HILL, B.A.

**An Efficient and Fully-Qualified Staff**

THE SITUATION IS IDEAL  
BUILDINGS ARE QUITE MODERN  
EDUCATIONAL RESULTS HAVE  
:: :: BEEN GOOD :: ::  
HEALTH RECORD EXCELLENT

**There will be Vacancies for the New School Year**

*Prospectus and full particulars from the Rev. W. Treffry (Bursar)  
Edgehill, Bideford.*



THE CLOISTERS, RYDAL SCHOOL

## RYDAL SCHOOL Colwyn Bay

A METHODIST PUBLIC  
SCHOOL BY THE SEA

- ¶ A School where every boy receives the maximum of individual attention.
- ¶ The New Buildings contain the most up-to-date laboratories and workshops.
- ¶ Boys are trained for the Universities, Professions and Commerce
- ¶ There are Entrance & Leaving Scholarships.
- ¶ There is a separate Junior School for boys between the ages of 8 and 12 years.

**Rev. A. J. Costain, M.A.**  
*Head Master.*



# Shebbear College, NORTH DEVON

---

540 FEET ABOVE SEA LEVEL.

A METHODIST BOARDING SCHOOL  
FOR BOYS, FOUNDED IN 1841.

---

THE School has a thoroughly up-to-date equipment and is replete with every modern convenience. :: Recent additions include a large Gymnasium, Common Room, Library and a magnificent suite of Science Laboratories.

The School has its own Farm of 95 acres, on which is a fine open air Swimming Bath. :: :: ::

The Health of the School is, and long has been, almost unrivalled.

The fees are moderate. :: :: ::

---

Headmaster : J. ROUNSEFELL, Esq., <sup>M.A.</sup><sub>B.Sc.</sub>

---

*For Prospectus apply to—Rev. J. FORD REED,  
Shebbear College, North Devon.*



## EAST ANGLIAN SCHOOL

BURY ST. EDMUNDS.

### METHODIST BOARDING SCHOOL FOR BOYS

(Founded 1880)

Boys are received into the Preparatory School (**HARTLEY HOUSE**) from the age of 8 years. Excellent premises, extensive playfields, and situated in delightful surroundings on the edge of a beautiful old-world Town. Good through communication with London, Midlands and the North. Sound training by a Graduate Staff of able Masters, *who make a point of taking a personal interest in every individual boy.*

A distinguished **RECORD OF SUCCESSES**: 23 University of London School and Higher Certificates (13 with Matriculation) gained in 1932.

**Inclusive Boarding Fee from 72 gns. p.a.**

The atmosphere and tone of the School are in keeping with its  
**HAPPY AND VIRILE METHO-  
DIST TRADITION.**

Headmaster :

**JOHN W. SKINNER, M.A., Ph.D.,**

*who will be pleased to arrange an in-  
terview either at the School or elsewhere.*

## TRURO SCHOOL

**A Public Residential School for  
Boys. On the Cornish Riviera.**

Moderate Fees. Modern Buildings  
in Healthy Surroundings.

Excellent Dietary.

Large Playing Fields.

Resident Staff of University  
Graduates. Advanced Courses  
in Mathematics, Science and  
Commerce.

*Full Preparation for the Universities  
and Professions & for Business Life.*

**If you must live in the FOG  
send your son to a Methodist  
School in the Sunshine.**

*Illustrated Prospectus and  
all particulars from the Headmaster*

**Egbert H. MAGSON**

M.A., D.Sc. (Lond.)

## KENT COLLEGE CANTERBURY

=

*Head Master :*

**ALFRED BROWNSCOMBE, M.A. (Cantab).**

=

The School is situated on high ground about a mile from  
the City and five miles from the Sea.

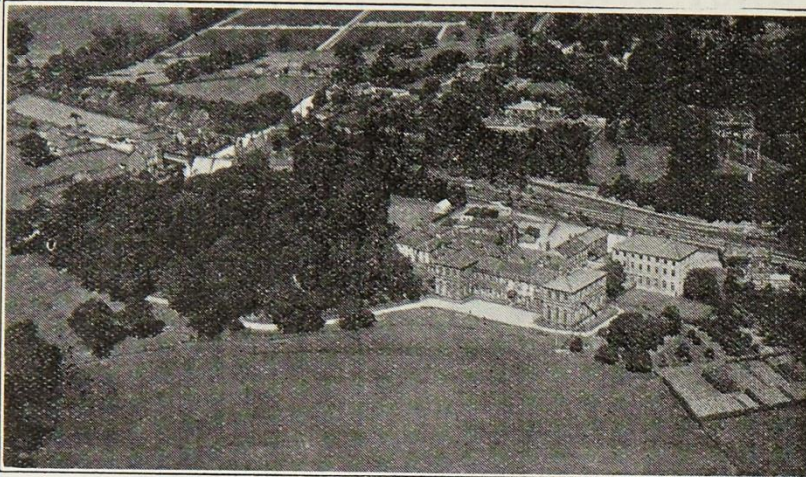
**PLAYING FIELDS OF 20 ACRES IN EXTENT**

Recent additions include : Science Wing, Sanatorium,  
Open-Air Swimming Bath.

**PREPARATION FOR ALL EXAMINATIONS**

**Inclusive Boarding Fee from £72 p.a.**



*Overland Air Views*

## WOODHOUSE GROVE • SCHOOL •

*Apperley Bridge, Yorks.*



*Chairman of the Governors :* C. J. F. ATKINSON, Esq.,  
M.B.E., LL.B.

*Head Master :* CLIFFORD W. TOWLSON, M.A. (Oxon).



Woodhouse Grove School is delightfully situated within easy reach of Yorkshire Moors.

It has an exceptionally fine health record.

Its Examination results are consistently good. **33** School Certificates (including **15** Matriculations) were gained last July.

Its buildings are admirably equipped, and the playing fields are spacious.

It provides a complete training for the Universities, the Professions, and for Business Life.

There are numerous Leaving Scholarships.

There is a Junior Department for boys from 7.

THE SCHOOL FEES ARE ONLY **£26** PER TERM.



# Queen's College

## TAUNTON

*Headmaster* : C. L. WISEMAN, M.A., CANTAB.

(Mathematical and Natural Sciences Triposes : formerly Scholar of Peterhouse, Cambridge, and Instructor-Lieutenant-Commander, R.N.)



**QUEEN'S COLLEGE** is the School widely known among Methodists as "Taunton." Letters must be fully addressed.

**SITUATED ON A HILL**, the School is about  $1\frac{1}{2}$  miles out of Taunton, and is surrounded by some 30 acres of Playing Fields. It was inspected by the Board of Education in December, 1930.

**CLASSICS, MODERN LANGUAGES, OR SCIENCE** Courses lead normally to Oxford and Cambridge School Certificate, Higher Certificate, University Scholarships, etc. Boys are regularly proceeding to Cambridge and other universities, as well as into professional and commercial life.

**ENTRANCE SCHOLARSHIPS** for boys under 14 are competed for yearly in June. There is a special Scholarship Scheme for the sons of Ministers.

**EQUIPMENT IS MODERN.** There are Physical, Chemical, and Photographic Laboratories. Workshop and Gymnasium. A covered Swimming Bath is in use all the year round. A new Changing Room and Bathroom has been completed on modern lines.

**THE JUNIOR SCHOOL** at Cotlake House, while in the grounds of the College and sharing in its traditions and social life, is a self-contained unit for boys from 8 upwards. It has recently been in part re-constructed and entirely modernised.



## You are Their Eyes



*The National Institute for the blind has produced the Holy Scriptures, in embossed types to be read by the blind, in many languages, including :*

English	Arabic
Gaelic	Armenian
Irish	Azerbaijan
Welsh	Batta-Toba
Danish	Bengali
Dutch	Chinese
French	Congo
German	Hindi
Greek	Hindustani
Hebrew	Kaffir
Italian	Lunganda
Japanese	Malayalam
Latin	Marathi
Norse	Ningpo
Portuguese	Punjabi
Russian	Shanghai
Spanish	Tabitian
Swedish	Tamil

Have you never had a friend who helped you when you were in a hole? Have you never seen a glorious sunset? Have you never spent such a happy hour that you wanted to do something—anything—just because you were so happy?

If you have—then send your thanks in the form of a contribution to the National Institute for the Blind.

The Institute deals with blindness, defeating its helplessness, from babyhood upward, and throughout the whole country your help will bring a gleam of light to those that live in darkness.

Your money is their eyes.

Full information can be obtained from the Headquarters :

### National Institute for the Blind

224, Great Portland St., London, W.1.

(The N.I.B. is registered under the Blind Persons Act, 1920)