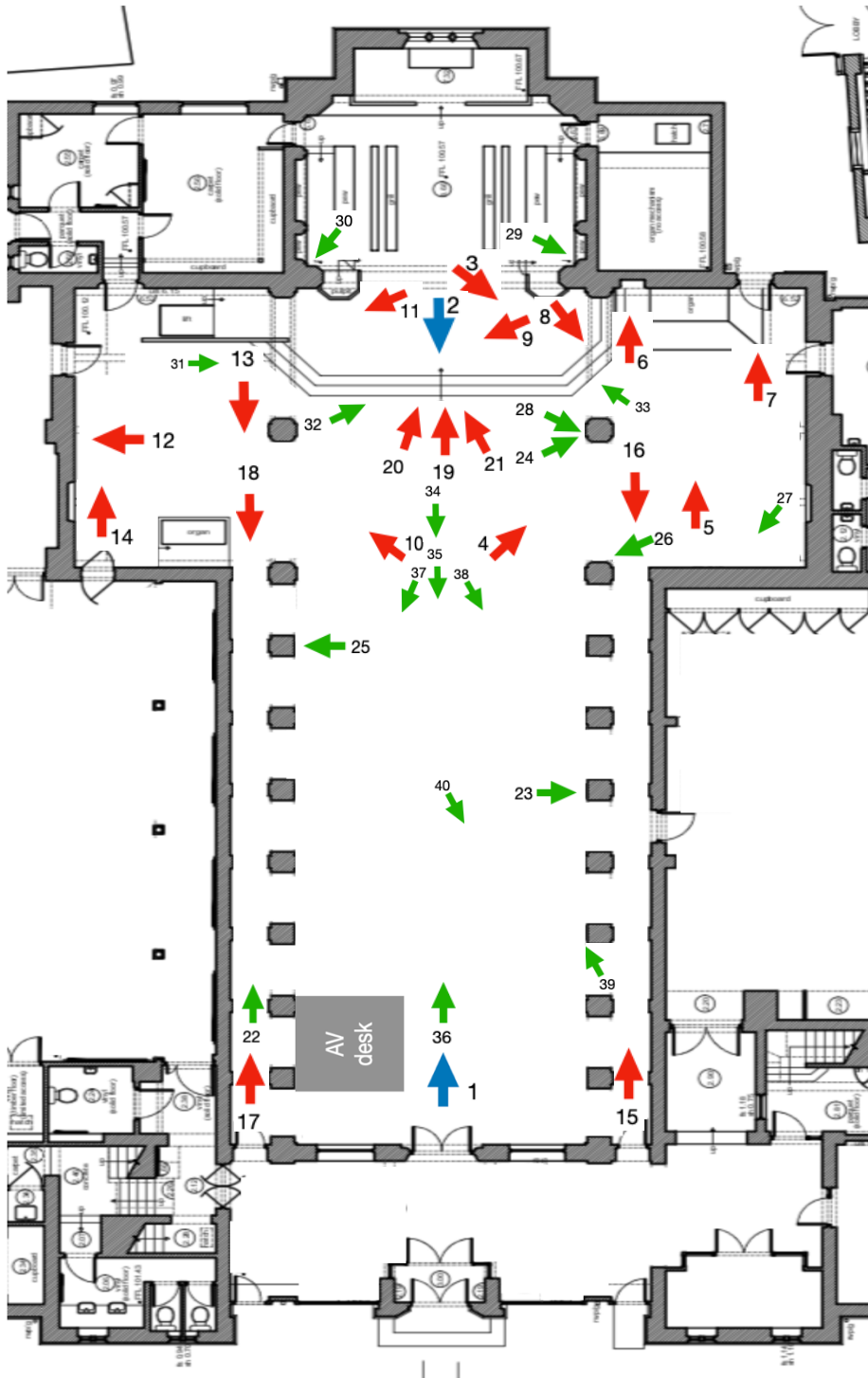


High Street Methodist Church, Harpenden
photographic record of the church interior
taken in January 2025
just prior to the Shaped For Mission project



This plan indicates from where the photographs on the following pages were taken.

The Chancel (East end of the Church) is at the top.

The **blue arrows** relate to the main views which will be produced as 5" x 7" monochrome prints in the hard copy.

The **red arrows** relate to the supplementary colour photographs.

The **green arrows** relate to photographs of fittings and fixtures being replaced as part of the Shaped For Mission project

Main views (monochrome)

Photo 1 – Main view from West Entrance looking East



This is the view of the Nave on entering through the main West door through the foyer and from the High Street. There are eight small arches on either side forming North and South colonnades with side aisles beyond running the length of the Nave. At the East end of the Nave, two larger arches on each side divide the Nave from the two transepts. The *Shaped For Mission* project will not alter this physical architectural structure.

On the near left is the AV desk, which is to remain beyond the project.

On the near right are a few of the timber framed upholstered chairs of which there are 100 in the Church, mainly laid out at the East end of the Nave and in the transepts either side. There is also a freestanding cupboard containing Singing the Faith hymn books and Methodist Worship Books.

Beyond that are 15 pews on the left and 14 pews on the right, one less on that side to provide a gangway to Wesley's Café accessed by crossing the South Colonnade.

Photo 2 – Main view from East Chancel looking West



This is the view of the Nave taken from the Dais at the East end, looking towards the main West entrance door, which leads through the Foyer and out onto the High Street. The West walls of the South and North Transepts are just visible (foreground left and right respectively). Just inside these are the arched doorways providing the East entrances to the South and North Colonnades.

Congregational seating is provided by the timber framed padded chairs situated in the crossing of Nave and Transepts, and the 29 congregational pews fixed to the floor in the main stretch of the Nave.

Supplementary Views (Colour)

THE SOUTH TRANSEPT

Photo 3 – The South Transept and Nave viewed from the East Chancel



This view shows the two large arches dividing the Nave from the South Transept.

The end of the organ pipes situated against the East wall of the South Transept are visible through the nearest arch.

Photo 4 – The South Transept viewed from the Nave



This view shows the same two large arches dividing the Nave from the South Transept.

The two large Nave windows have vertical blinds to screen the organ pipes and the projection screen to prevent them being adversely affected by the sun light.

Photo 5 – The East wall of the South Transept



Organ pipes dominate the East wall of the South Transept, beyond which there is a separate chamber room containing the main organ, including bellows and additional sets of pipes.

Below that are:

1. On the left, the original font which is built into the East wall of this transept; and
2. On the right, an arched external doorway.

Photo 6 – The original font



The original font in the East wall of the South Transept features a stone arched recess and a solid stone basin built into the wall.

The pewter jug, still in use to fill a newer portable font, is kept here as a reminder of the unbroken link between baptisms past and present in this Church.

Photo 7 – The door in the East wall of the South Transept



This original external door in the East wall of the South Transept is topped with a recessed brick arch. The door itself contains twelve panels.

Whilst not currently part of the *Shaped For Mission* project, the church is currently working towards forming a wider access and door in order to provide an improved fire exit. It is envisaged that the new doorway will be designed to match the current design.

Photo 8 – The South Transept viewed from the Dais



As this photo shows, two video screens are attached to the large central pillar standing between the South Transept and the Nave. These are used mainly to relay images and words during worship to those on the Dais and South Transept.

THE NORTH TRANSEPT

Photo 9 – The Nave & North Transept viewed from the East Chancel



This view provides a good view of the pattern of arches inside the North elevation of the church.

One of two identical large windows in the North wall of the North Transept is visible through the nearest arch.

Photo 10 – The North Transept viewed from the Nave



This view shows both Transept windows, with the brass war memorial in between.

The organ console is just inside and to the left of the nearest arch. The umbilical linkage between the organ console in this transept and the organ pipes in the other runs in a conduit in the floor underneath the Dais. The console is designed to be movable.

Photo 11 – The North Transept viewed from the Dais



To the right of this view, beyond the Communion Table, is a lift to enable wheelchair users to access the Dais.

This is currently broken and not designed to carry the weight of modern motorised wheelchairs.

The *Shaped For Mission* project includes replacing this lift with a stronger modern alternative.

Photo 12 – The War Memorial and shelf on the North wall of the North Transept



The church's war memorial is a feature of the North wall of the North Transept. It features the names of eight members who died in the 1914-1918 conflict, and ten who died in the 1939-1945 conflict.

It is hoped that the *Shaped For Mission* project will declutter this Transept so that the memorial can be more of a feature.

Photo 13 – The organ console against the West wall of the North Transept



The organ console is designed to be moveable but the umbilical connecting it to the organ pipes is no longer sufficiently robust for this purpose. The cover for the umbilical channel is visible in the flooring.

The doorway in the West door of the North Transept, seen to the right of the organ console, provides a double skin access to the church Hall.

Photo 14 – North Transept viewed from its South-West corner



This view shows how the North Transept is currently the default storage space for a baby grand and upright piano.

On the far side, a timber screen shields the wheelchair lift to the Dais. This screen has been designed to match the woodwork below the organ pipes in the South Transept, just visible top right.

THE SOUTH COLONNADE TO THE NAVE

Photo 15 – South Colonnade viewed from the West end



This is the view just inside the South Colonnade after accessing it from the entrance Foyer.

Directly at the far end of this Colonnade, and framed by the arches, the original font is fixed into the East wall of the South Transept.

A feature of both Colonnades seen here are the original timber shelves above the radiators.

Photo 16 – South Colonnade viewed from the East end



This view shows the arched opening enabling access to the South Colonnade from the South Transept.

Access to the Wesley's Café on the left is provided by a doorway situated around half way along this Colonnade.

THE NORTH COLONNADE TO THE NAVE

Photo 17 – North Colonnade viewed from the West end



This is the Eastward view of the North Colonnade having entered it from the Foyer.

On the top right are the main fuse box and light switches for the Nave and Transepts. As part of the *Shaped For Mission* project the lighting system in the church is to be replaced with a modern LED system, and this area tidied up.

Photo 18 – North Colonnade viewed from the East end



This view is taken from the side of the organ console in the North Transept. This shows the access arch leading into the North Colonnade which ends with a door into the Foyer.

THE CHANCEL

Photo 19 – Chancel viewed from the central Nave



The East Chancel is the most significant space within the church. The choir pews are of a high quality, as are the pulpit and the reading stand.

The *Shaped For Mission* project is making no changes to this important space, beyond sanding and sealing the parquet floor.

Photo 20 – Chancel viewed from the Dais Steps looking South-East



This view shows the three archways against the South wall of the Chancel, beyond which is the organ chamber.

To the right of the reading desk stands the moveable font which is used for most baptism services.

Photo 21 – Chancel viewed from the Dais Steps looking North-East



This view shows the position of main projection screen when it is not in use.

As part of the *Shaped For Mission* project, the red padded chairs will be replaced with wooden seating of a quality and standard suitable for this most significant space within the church.

Fittings & Fixtures being replaced as part of the *Shaped For Mission* project

LIGHTING

Photo 22 – Colonnade ceiling lights



GENERAL NOTE ON LIGHTING

As evidenced by these photographs, over the church's 95 year history the lighting system has evolved through the occasional addition of new and varied light fittings, which do not match or work as a single system.

As part of the *Shaped For Mission* project these older systems and fittings will be removed and a new, integrated and greener LED system will be fitted.

Photo 23 – Nave Up-Lighters



Photo 24 – Floodlight for the Dais



Photo 25 – Emergency Lights

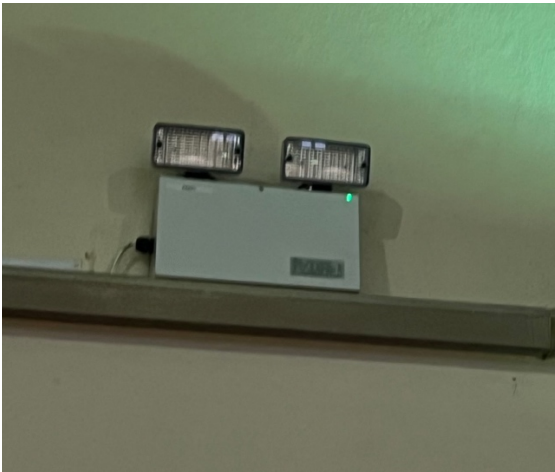


Photo 26 – Flood Lights in the South Transept



Photo 27 – Transepts Up-Lighters



Photo 28 – Floodlights to the Dais



Photo 29 – Assorted Lights on the Chancel Ceiling (South)

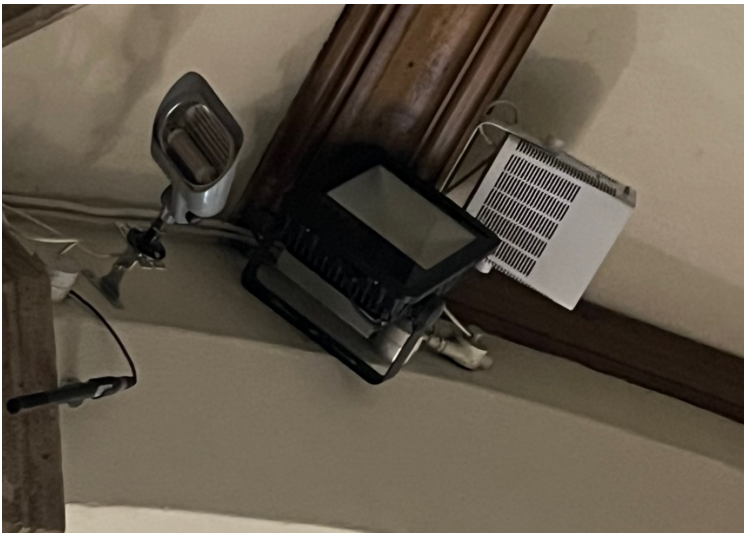


Photo 30 – Assorted Lights on the Chancel Ceiling and Wall (North)



DAIS STEPS

Photo 31 – Dais Steps viewed from the North Transept



The three photographs on this page show the Dais steps from different angles.

The Dais is designed to be removeable but usually remains in this default position.

Photo 32 – Dais Steps viewed from the Central Nave



The steps are made of poor quality material and as part of the *Shaped For Mission* project will be replaced with a similar design of steps but made to a higher quality with an Oak finish.

These views also demonstrate the state of the parquet flooring, which as part of the project will be sanded and re-sealed to bring out the original floor finish.

Photo 33 – Dais Steps viewed from the South Transept



PEWS

Photo 34 – Nave Pews from the West Door (low view)



View of the central aisle formed by twenty-nine Chestnut pews, fifteen on the left (North) and fourteen on the right (South).

Photo 35 – Nave Pews from the West Door (high view)



This view shows how each pew has a shelf at the back of the seat to provide storage for hymn books and notices etc.

Each pew is fixed to the floor with a bolt and bracket.

Photo 36 – Nave Pews from the East end



This view shows how the end of the pews extend over the edge of the central aisle laid out in the parquet floor.

The pews also relate in a haphazard way to the eight Colonnades arches on either side of the Nave.

Photo 37 – Pews on the North side of the Nave



Each Nave pew bears a number, which is a throwback to an earlier age where pews were rented.

The seat of each pew has a red-carpet runner.

Photo 38 – Pews on the South side of the Nave



This view looks towards the stained glass window in the West wall.

As part of the *Shaped For Mission* project all but four pews will be removed to provide a flexible space.

Photo 39 – Nave Pews viewed from the South Colonnade



This view shows how the pews relate to the Colonnade arches in a rather haphazard way, so that only some pews may be accessed from the side aisles.

Photo 40 – Nave pews in the South-West corner showing gangway to Wesley’s Cafe



As part of an earlier reordering scheme, a pew was removed to provide a thoroughfare between the central aisle and a door into Wesley’s café in the room beyond the South Colonnade.

This created this block of six pews.